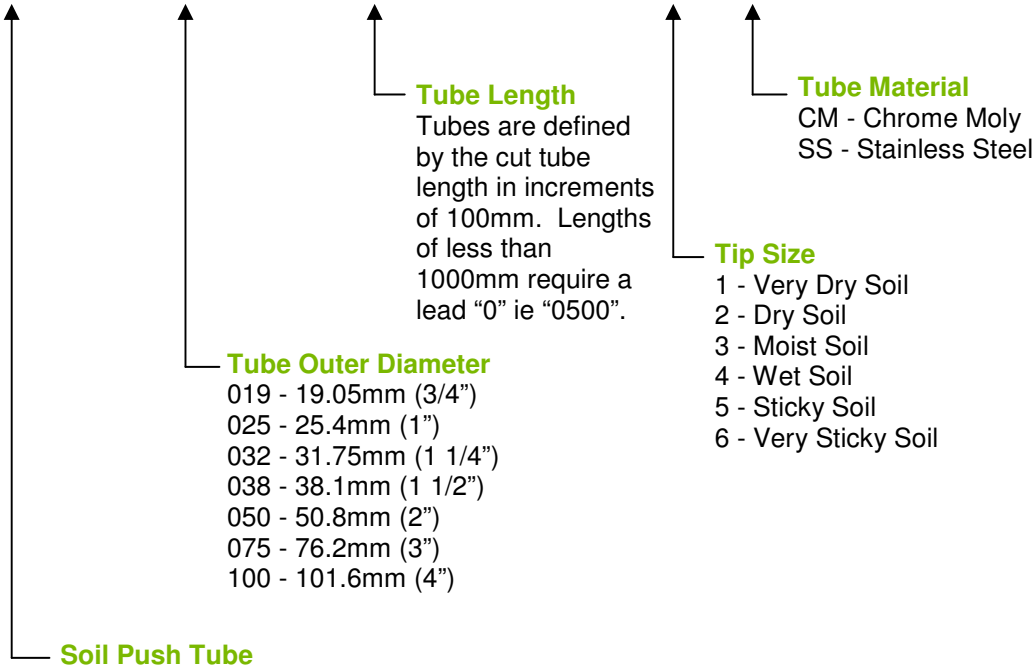


SPT-000x0000+#X-AA

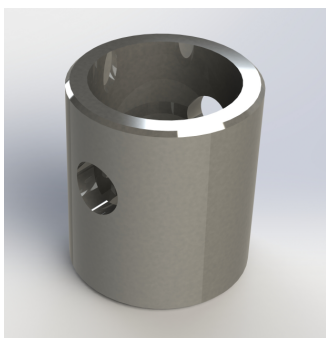


Notes:

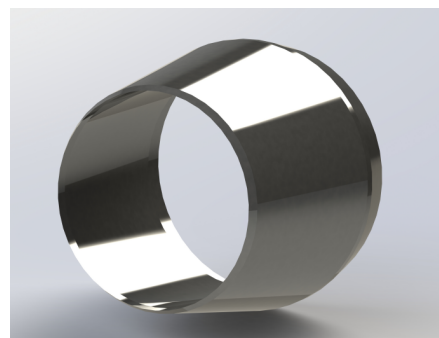
Tube lengths are specified by the cut length of the tube. In ordering tubes for hydraulic rig insertion you should generally specify 100mm longer than the sampling depth you require. This will reduce the probability of compacting samples into the head of the tube. For manual sampling the issue of head compaction is not applicable, therefore your tube length order can match your sampling depth.

Cutting tips are added to the tube so the overall length increases. Cutting tip size is defined by the difference in diameter between the inside diameter of the cutting tip and the inside diameter of the tube. Generally tips sizes of 1 to 4 are available for all sizes of tube are in stock. Tips sizes of 5 & 6 in most tube sizes are special orders and require additional time to manufacture.

Tubes can be manufactured in Stainless Steel or a Chrome Molybdenum Alloy. Stainless Steel is generally rust free and maintains a smooth surface. In more recent years, Chrome Moly steel has provided a higher strength alternative together with some rust resistance. This material is now generally considered to be the standard for good quality soil tube manufacture.



Typical Head Design



Typical Cutting Tip Design