

RimiK

presents the

CP40 II

CONE PENETROMETER

Quick, easy and accurate
collection of cone index data combined
with Global Positioning
coordinates.

*Preferred by researchers
world wide*



**NOW
INCLUDES
Bonus GPS -
Your choice
of ASAE
cones or
Euro Cones**

CP40II

Specifications

The instrument of choice for quick, accurate and easy collection of cone-index data. An essential tool for soil studies involving compaction, trafficability and moisture distribution.

Using the CP40II in field, cone index values up to 5600 kPa (using ASAE cone) can be measured to depths of 750mm and recorded quickly by one person. Insertions are automatically recorded and stored in files that include the cone index data, depth, time, date, GPS location and more.

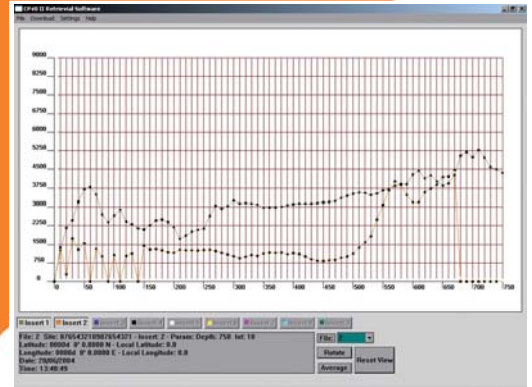
During an insertion the screen will display the following:

- Insertion depth
- Insertion speed
- Cone index value

Once an insertion is completed the screen displays a graph of the data recorded. This affords the operator an immediate visual feedback about the soil profile just recorded. Previously recorded insertions stored in memory can also be displayed.

File numbers are automatically incremented at the completion of each file. During each insertion the speed of penetration is constantly monitored. If the set maximum speed is exceeded an alarm will sound or the instrument may optionally terminate the insertion. This ensures that the highest quality of data is recorded. A terminated insertion gives the user the option to save a truncated insert.

The internal battery voltage is monitored and displayed on screen. Automatic power off occurs once the battery discharges to a predetermined level. This prevents battery damage occurring if the unit is unintentionally left powered on.



Software

The software includes the following features:

- Displays a graph of all inserts within a file number, as well as an average graph for all inserts within a file number.
- Retrieves data from CP40II, saving for later use with CP40II Software or export to CSV or Excel formats.
- Sets CP40II parameters and set a site name with the CP40II Retrieval Software.

Quick Specifications

Weight: 3.9kg

(assembled without GPS)

Weight: 9kg (in case)

Dimensions: 560x1073x130mm

(assembled without GPS)

Case Dimensions: 470x358x175mm

Maximum Small Cone Index: 5600kPa, 75kg

Maximum Large Cone Index: 2200kPa, 75kg

Maximum depth of insertion: 750mm

Interval setting: 10,15,20 or 25mm

Resolution: 0.03kg

Operating Temperature: -10 to 60 C

Continuous use without GPS: 11.5hrs

Continuous use with GPS: 8hrs

Standby time: 26hrs

Manufactured by:
RFM Australia Pty Ltd

Rimik

Available from:

14 Molloy Street, Toowoomba Q 4350
Ph: 07 4631 4300 Fax: 07 4631 4301
Email: mail@rimik.com.
www.rimik.com